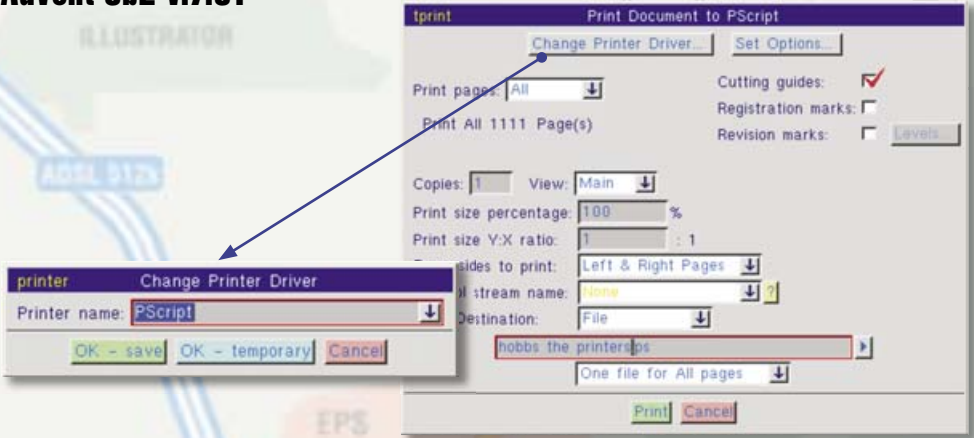


Printing from...

Advent 3b2 v.7.51



PRINT DOCUMENT TO PSCRIPT

Change Printer Driver



We recommend that you use the printer definition **PScript** as shown above left. To change the printer definition click the **Change Printer Driver** button.

Set Options

After setting the remaining options on this dialogue window click this button to configure the PostScript options.

Print Pages: (pages being printed), Copies: 1, View: Main, Print size percentage: 100%,

Print size 'Y:X Ratio': 1, Page sides to print: Left & Right Pages,

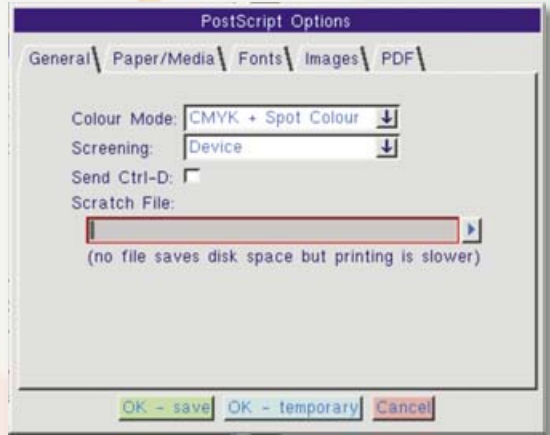
Control Stream Name: None, Print Destination: File, 'One file for All pages'

Cutting Guides: checked, Registration marks: unchecked, Revision marks: unchecked



Printing from...

Advent 3b2 v.7.51



GENERAL

Colour Mode: CMYK + Spot Colour

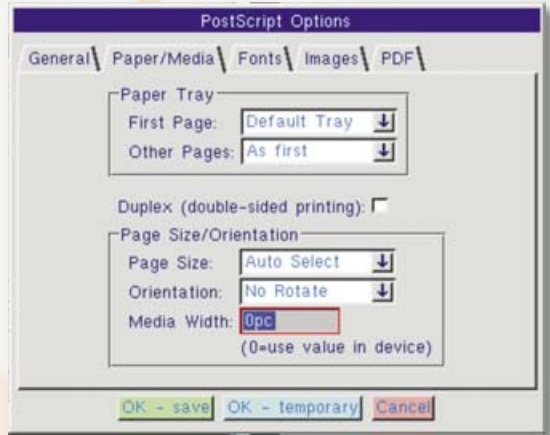
Screening: Device

Send Ctrl-D: unchecked



Printing from...

Advent 3b2 v.7.51



PAPER/MEDIA

Paper Tray

First page: Default Tray

Other Pages: As first



These two options are not essential but should describe the default

Duplex (double-sided printing): unchecked

Page Size/Orientation

Page Size: Auto Select

Orientation: No Rotate

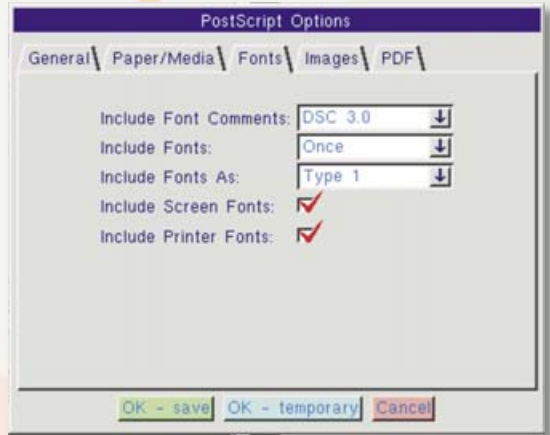


This option can be ignored as the Auto Select for page size will override



Printing from...

Advent 3b2 v.7.51



FONTS

Include Font Comments: DSC 3.0

Include Fonts: Once

Include Fonts As: Type 1

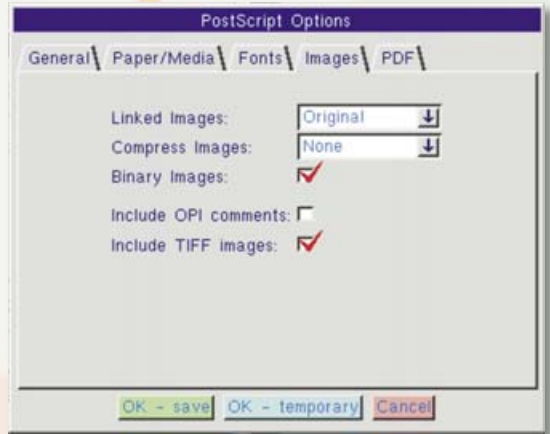
Include Screen Fonts: checked

Include Printer Fonts: checked



Printing from...

Advent 3b2 v.7.51



IMAGES

Linked Images: Original

Compress Images: None

Binary Images: checked

Include OPI comments: If you are not using an OPI workflow this can be unchecked.

Include TIFF images: checked



The PDF tab can be disregarded

