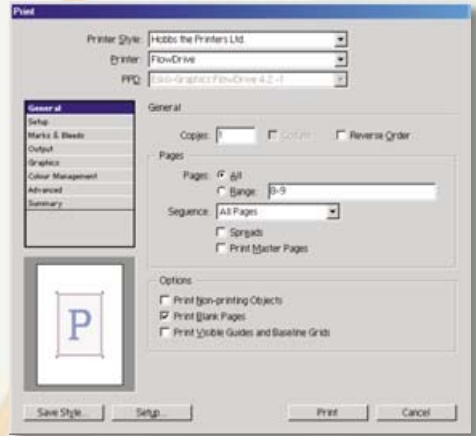


# Printing from...

## InDesign 2



**Printer Style: Hobbs the Printers Ltd.**



You can save yourself time by using a pre-defined printer style. The Print Style option can be found in the File menu.

**Printer: FlowDrive**



It is important to set the correct page size in the printer configuration. This can be set by clicking the **Setup** button located bottom left of the **Print** dialogue window. The page size chosen should be large enough to allow for bleeds and crop marks.

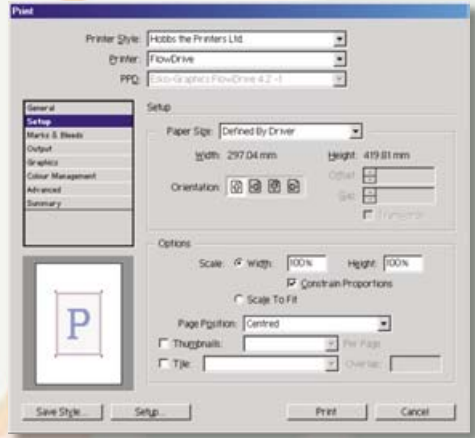
### GENERAL

Copies: 1, Reverse order: unchecked, Pages: (pages being printed),  
Sequence: All Pages, Spreads: unchecked, Print Master Pages: unchecked,  
Print Non-printing objects: unchecked, Print Blank Pages: checked,  
Print Visible Guides and Baseline Grids: unchecked



# Printing from...

## InDesign 2



### SETUP

Page Size: Defined by Driver

Orientation: (dependant on style of document)

### Options

Scale: Width 100% - Height 100%

Constrain Proportions: checked

Page Position: Centred

Thumbnails: unchecked

Tile: unchecked

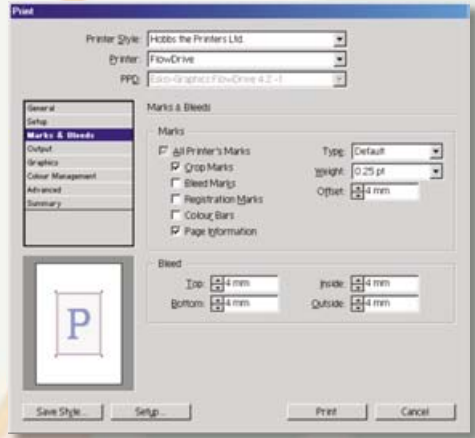


Look at the fit preview towards the bottom left of the Print dialogue window and check to ensure that your document fits on the chosen print size



# Printing from...

## InDesign 2



### MARKS AND BLEEDS

#### Marks

Crop Marks: checked

Page Information: checked



The remaining check boxes under this heading should be unchecked

Type: Default

Weight: 0.25pt

Offset: 4mm

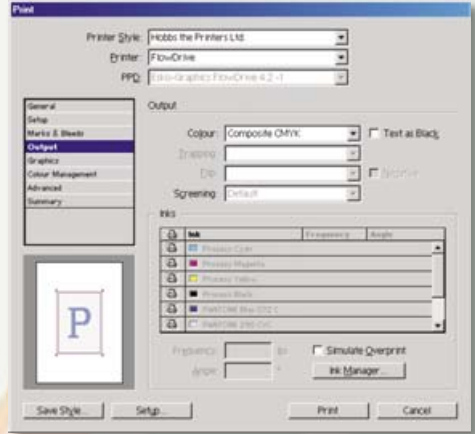
#### Bleed

Apply a value of 4mm to Top, Bottom, Inside and Outside.



# Printing from...

## InDesign 2



### OUTPUT

Colour: Composite CMYK

Text as Black: unchecked

### Inks

Simulate overprint: unchecked

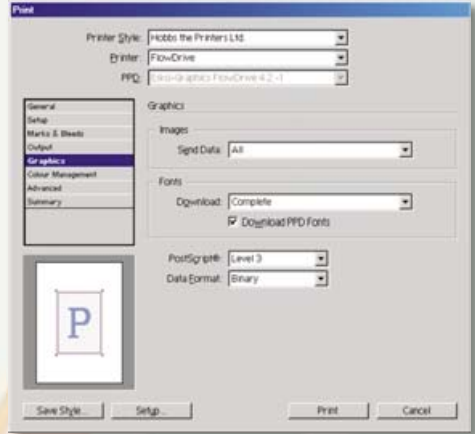


Click the Ink Manager button and check to ensure that all your colours are going to print as intended.



# Printing from...

## InDesign 2



### GRAPHICS

#### Images

Send Data: All

#### Fonts

Download: Complete

Download PPD Fonts: checked

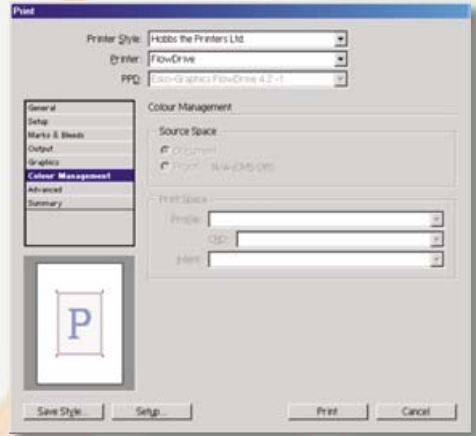
PostScript: Level 3

Data Format: Binary



# Printing from...

## InDesign 2



### COLOUR MANAGMENT



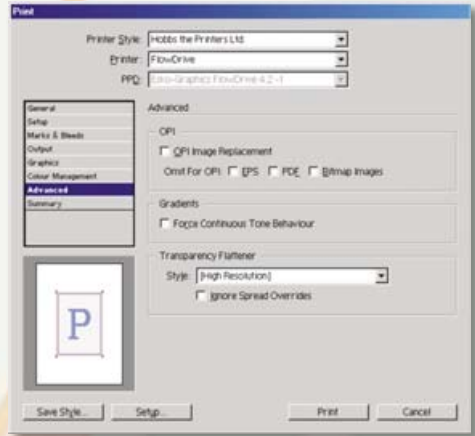
Colour management is not required and should be turned off.

The colour management options can be accessed via the Edit menu.



# Printing from...

## InDesign 2



### ADVANCED

#### OPI

All options under the OPI heading unchecked

#### Gradients

Force Continuous Tone Behaviour: unchecked

#### Transparency Flattener

Style: High Resolution

Ignore Spread Overrides: unchecked



Transparency must be flattened before producing files for us to print from. If you have any doubts about the result of your transparency please call us.

