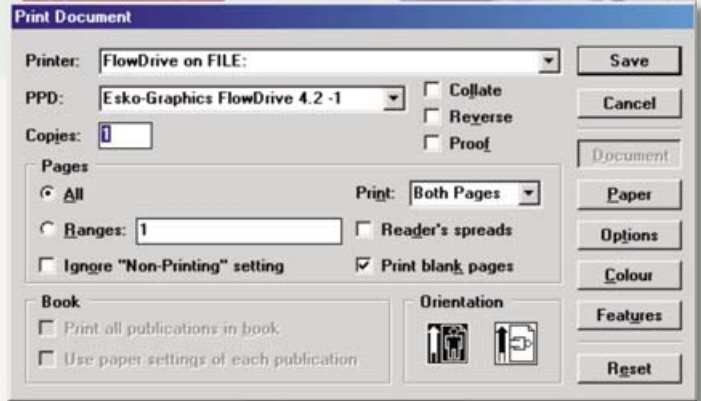


Printing from...

PageMaker 7



DOCUMENT

Printer: FlowDrive on FILE

PPD: Esko-Graphics FlowDrive 4.2-1

Copies: 1, Collate: unchecked, Reverse: unchecked, Proof: unchecked.

Pages

Pages: (Pages being printed)

Print: Both Pages

Reader's Spread: unchecked

Print blank pages: checked

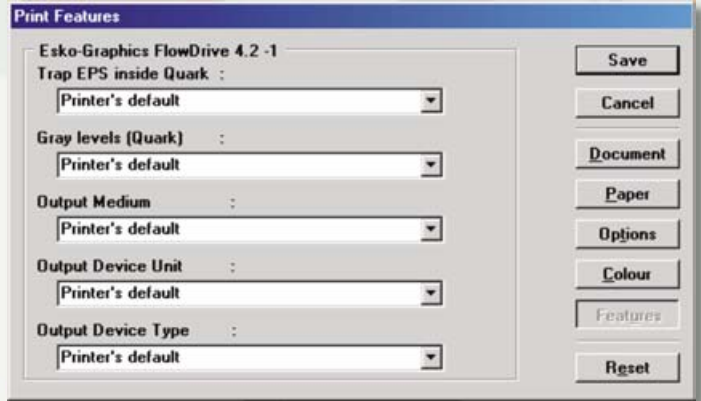
Orientation

(dependent on style of document)



Printing from...

PageMaker 7



FEATURES

Esko-Graphics FlowDrive 4.2-1

Trap EPS inside Quark: Printer's default

Gray levels (Quark): Printer's default

Output Medium: Printer's default

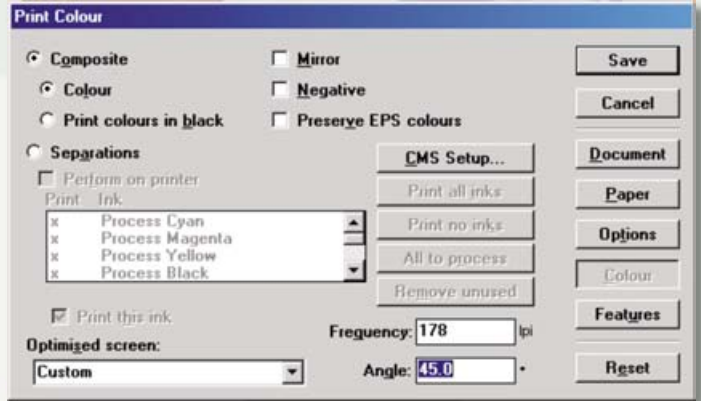
Output Device Unit: Printer's Default

Output Device Type: Printer's Default



Printing from...

PageMaker 7



COLOUR

Composite: checked

Colour: checked

Mirror: unchecked

Negative: unchecked

Preserve EPS colours: unchecked

CMS setup: colour management OFF
(you will need to click the CMS setup tab to turn colour management off)

Optimised screen: Custom
(overridden by our Image-Setter)

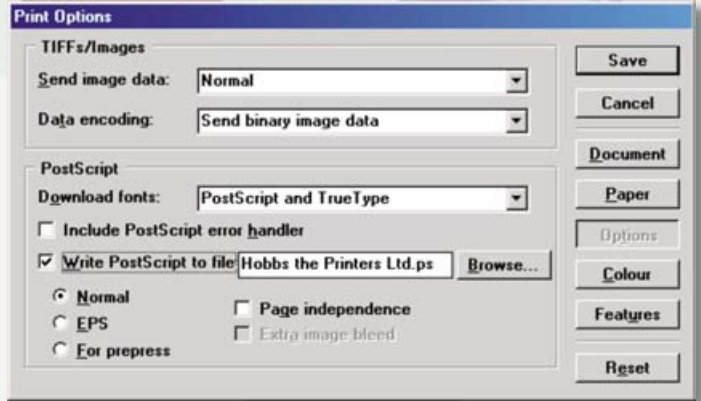
Frequency: 178 lpi
(overridden by our Image-Setter)

Angle: 45° (overridden by our Image-Setter)



Printing from...

PageMaker 7



OPTIONS



It is essential to first check **Write PostScript to File** and choose **Normal** before setting any of the other options on this palette

PostScript

Download fonts: PostScript and TrueType

Page independence: unchecked

TIFFs/Images

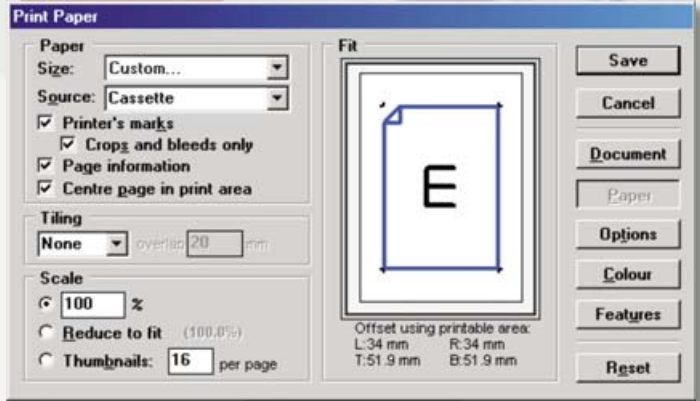
Send image data: Normal

Data encoding: Send binary image data



Printing from...

PageMaker 7



PAPER

Paper

Size: Custom
(equal to document size plus crops and bleeds)

Source: leave as Cassette

Printer's marks: checked

Crops and bleeds only: checked

Page information: checked

Centre page in print area: checked

Tiling: None, Scale: 100%



Using the fit preview, check to ensure that your document fits on the chosen print size

