

# Printing from...

## Quark Xpress 5



Printer: FlowDrive



It is important to set the page size using the Properties tab in the top right corner of the Print dialogue window. The page size should match the size entered on the Setup tab.

Print Style: Hobbs the Printers Ltd.



You can save yourself time by using a pre-defined print style, the Print Style option can be found in the File menu.

Copies: 1, Pages: (pages being printed)

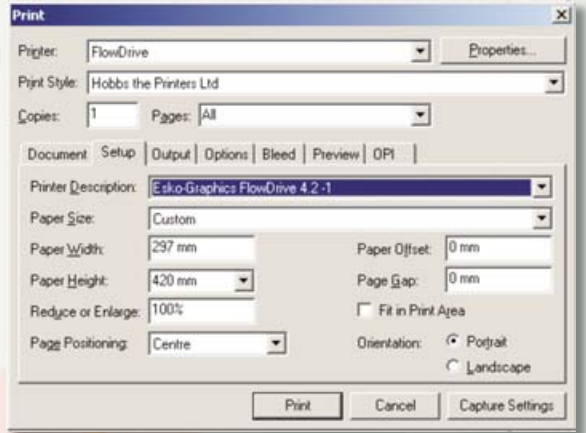
### DOCUMENT

Separations: unchecked, Spreads: unchecked, Print Blank Pages: checked,  
Thumbnails: unchecked, Back to Front: unchecked, Page Sequence: All,  
Registration: Centred, Offset: 12pt (4mm), Tiling: Off



# Printing from...

## Quark Xpress 5



### SETUP

Printer Description:  
**Esko-Graphics FlowDrive 4.2-1**

Paper Size: Custom

Paper Width:  
(equal to document size plus crops and bleeds)

Paper Height:  
(equal to document size plus crops and bleeds)

Reduce or Enlarge: 100%

Page Positioning: Centre

Paper Offset: 0mm

Page Gap: 0mm

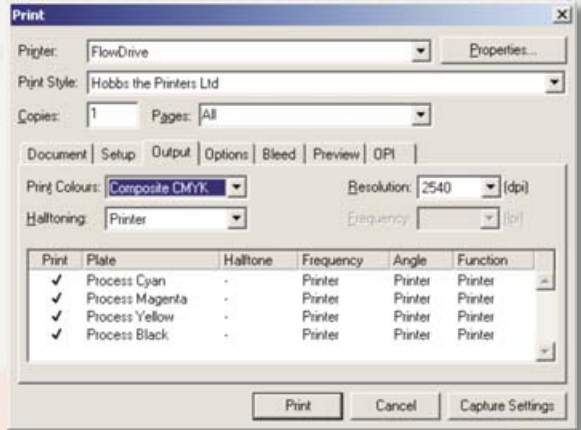
Fit in Print Area: unchecked

Orientation: (dependent on document set-up)



# Printing from...

## Quark Xpress 5



### OUTPUT

Print Colours: Composite CMYK

Halftoning: Printer  
(overridden by our Image-Setter)

Resolution: 2540dpi  
(overridden by our Image-Setter)

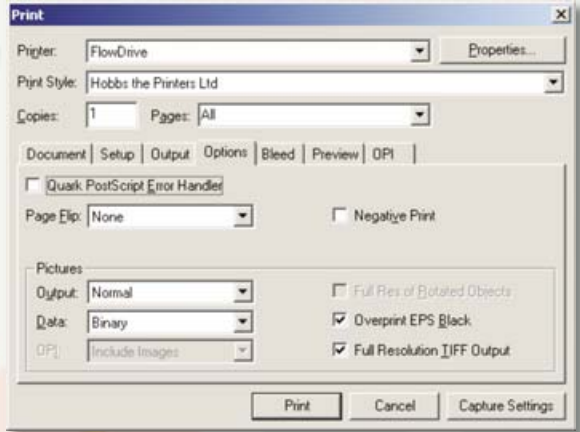


Halftoning and Resolution as stated above are controlled using our Image-Setter RIP. You can find out the halftone values that will be applied to your job on page 6.



# Printing from...

## Quark Xpress 5



### OPTIONS

Quark PostScript Error Handler: unchecked

Page Flip: None

Negative Print: unchecked

### Pictures

Output: Normal

Data: Binary

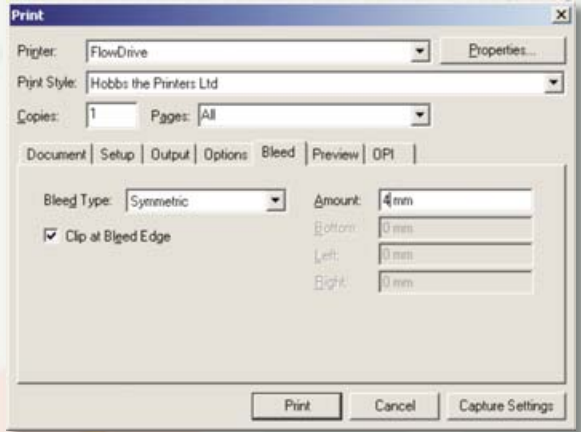
Overprint EPS Black: checked

Full Resolution Tiff Output: checked



# Printing from...

## Quark Xpress 5



### BLEED

Bleed Type: Symmetric

Clip at Bleed Edge: checked

Amount: 4mm

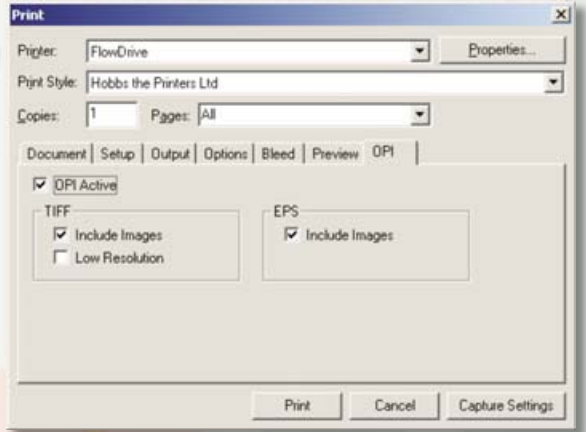


Please look at the preview tab so that you can be sure that your document fits adequately within the chosen print size.



# Printing from...

## Quark Xpress 5



### OPTIONS

#### TIFF

Include Images: checked

Low Resolution: unchecked

#### EPS

Include Images: checked

